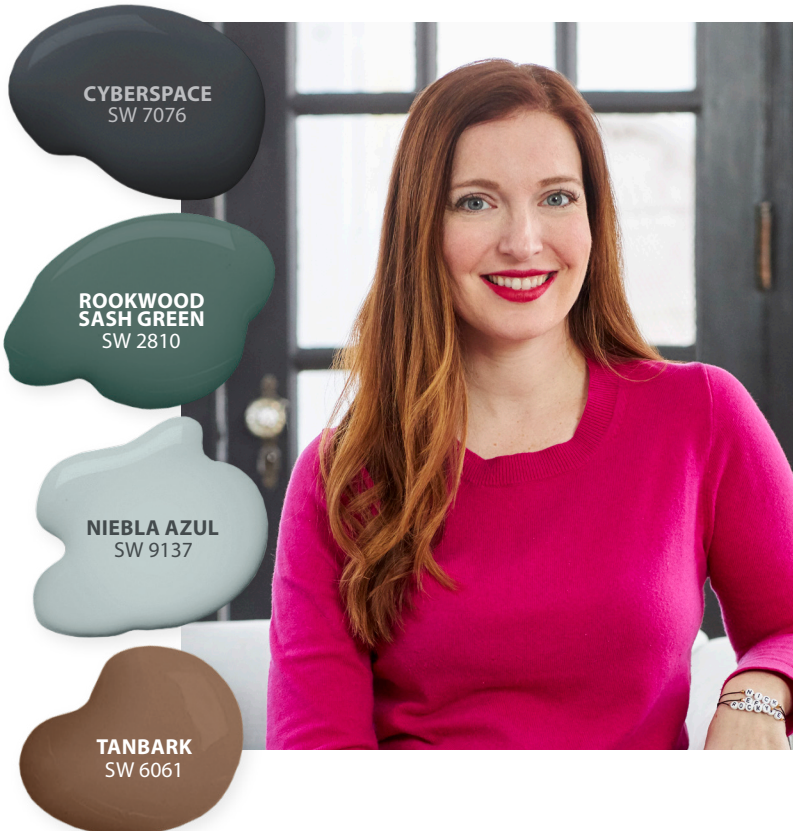




Liz's Enthusiast Palette Picks



PALETTE Perfection

with **Liz Lidgett**

See how this Iowa-based art gallery owner transformed her dining room using the shades in the ColorSnap® Color ID Enthusiast palette from Sherwin-Williams, and learn how you can make any space your own.

Taking the Color ID Quiz

As a gallery owner, I'm always thinking about color, but I needed some help pinpointing a palette for my dining room. I knew I wanted to add more drama to the space, so I turned to the Color ID quiz from Sherwin-Williams for help. After answering a few design questions, I was matched with the Enthusiast palette which really fits my passionate personality and made pulling the room together easy!

"The 16 colors in the Enthusiast palette can be effortlessly mixed and matched. You can't go wrong!"

- Liz Lidgett

Designing My Dining Room

I wanted paint colors that blended with the art around the house, so I decided on Cyberspace, a deep gray, for the walls, and I spruced up my bar cart with Rookwood Sash Green. I love how everything turned out.

WHAT'S YOUR COLOR ID?

Visit swcolorID.com to take the quiz and discover your perfect palette.



SHERWIN-WILLIAMS®